



(BU-FSC)



(IA-PD)

Marion Harris (1894-1948), a leading recording artist in the 1920s who introduced many songs that became jazz standards, recorded “Who’s Sorry Now?” in a slow 3/4 waltz-time for the Brunswick Co. in 1923.

Who's Sorry Now?

Year of Composition: 1923

Composers: Ted Snyder (1881-1965), music; Bert Kalmar (1884-1947) and Harry Ruby (1895-1974), lyrics.

First Performance: 1923 by the vaudeville team of Van & Schenk.

First Recording: 1923 by Ernest Hare (as "Bob Thompson").

Associated with: Marion Harris; Isham Jones; California Ramblers.

Suggested listening:

- Marion Harris, "with Orchestra" 1923 Brunswick
- Isham Jones Orchestra 1923 Brunswick
- California Ramblers..... 1923 Puritan
- Original Memphis Five 1923 Victor
- Red Nichols and His Five Pennies 1929 Brunswick
- ★Billy Banks and the Rhythmakers 1932 Vocalion et al.
- Hoosier Hot Shots..... 1940 Conqueror

Song Structure: This arrangement of "Who's Sorry Now?" is in the **key of G**, and has **eight chords**, G, B7, E7, A7, D7, G7, C, and C7. The song structure is **ABAC**, and the chord progression is I-III7 / VI7-II7 / V7-I-I7 / II7-V7 / I-III7 / VI7 IV / IV7-I-III7-VI7 / II7-V7-I (G-B7 / E7-A7 / D7-G-G7 / A7-D7 / G-B7- / E7-C / C7-G-B7-E7 / A7-D7-G).

Notes: Since 1923 "Who's Sorry Now?" has been played as a dirge-like waltz, a herky-jerky two-step, and a country music warble. But its inclusion here is for its proven value as an all-out hot jazz romp – as in the 1932 recording by Billy Banks and the Rhythmakers.



The Isham Jones Orchestra popularized "Who's Sorry Now?" with its 1923 instrumental recording.

Who's Sorry Now?

Music: Ted Snyder

1923 (Public domain)

Lyrics: Bert Kalmar, Harry Ruby

This adaptation by R.W. Bacon, 2023



G



B7

Who's sor-ry now? Who's sor-ry now?



E7



A7

Whose heart is ach-ing for break-ing each vow?



D7



G



G7

Who's sad and blue? Who's cry-ing, too?



A7



D7

Just like I cried o-ver you.



G



B7



Right to the end,

just like a friend,



E7



C



I tried to warn you some - how. _____



C7



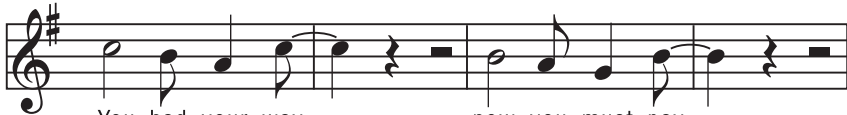
G



B7



E7



You had your way,

now you must pay.



A7



D7



G



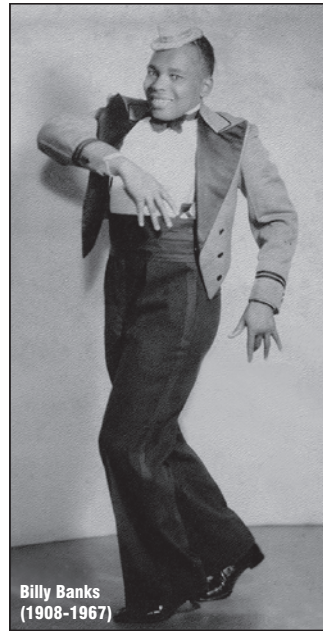
I'm glad that you're sor-ry now.

In the original 1923 sheet music, "Who's Sorry Now?" was presented in 3/4 time, in *valse moderato* tempo. At its conclusion, however, was a 4/4 "optional ending into fox-trot chorus."

Alternatively ...

Lyrics & chords in the key of C:

C **E7**
Who's sorry now? Who's sorry now?
A7 **D7**
Whose heart is aching for breaking each vow?
G7 **C** **C7**
Who's sad and blue? Who's crying, too?
D7 **G7**
Just like I cried over you?
C **E7**
Right to the end, just like a friend,
A7 **F**
I tried to warn you somehow.
 F7 C E7 A7
You had your way, now you must pay.
D7 **G7** **C**
I'm glad that you're sorry now.



Billy Banks
(1908-1967)

(VRC)



(VRC)



(VRC)

The hottest recording of “Who’s Sorry Now?” was made in New York on May 23, 1932 by **Billy Banks and his Rhythmakers**, an all-star group assembled by promoter **Irving Mills** and banjoist/guitarist **Eddie Condon** (1905-1973). This session included Condon, **Jack Bland**, **Red Allen**, **Pee Wee Russell**, **Al Morgan**, **Zutty Singleton**, and **Joe Sullivan**. The recording was issued on nine labels of the American Record Corp.

Double Up!
That is the popular demand.



VEGA

TENOR-LUTE

TENOR-GUITAR

Tenor-Guitar (list \$50)	\$40
Tenor-Lute (list \$75)	\$60
Tenor-Lute—6 strings octave tuning on 3rd & 4th (list \$100)	\$80
Tenor-Lute, Artist Special (list \$112.50)	\$90
Tenor-Lute, A. S.—6 strg. octave tuning on 2nd & 4th (list \$137.50)	\$110

Doubling Made Easy
with the new
Vega Tenor-Lute
and
Tenor-Guitar

BANJOISTS—double up on something different. That is the demand of orchestra leaders and audiences as well. The new VEGA Tenor-Lute and Tenor-Guitar have a tone that is different, an appearance that is different, yet **THE FINGERING REMAINS THE SAME** as the tenor banjo.

The Tenor-Lute or Tenor-Guitar is attractive in design, consisting of a lute or guitar body, and a twenty-three inch scale tuned as a tenor banjo. Its tone has the depth and resonance of a guitar and the sweetness of a mandolin, presenting beautiful effects in arrangement. Each instrument has that distinctive VEGA QUALITY, made with accuracy to every detail and of the choicest materials.

Every tenor player should be equipped with a Vega Tenor-Lute or Guitar. Ask your dealer to show you one. Made also for Plectrum fingering.

MANUFACTURED BY THE VEGA CO., BOSTON, MASS.
 MAKERS OF THE FAMOUS VEGAPHONE BANJOS

(VRC)



(VRC)



Eddie Condon
(1905-1973)

(VRC)



(VRC)

At the “**Rhythmakers**” sessions in April, May, and July 1932, **Eddie Condon** and fellow 4-string banjoist **Jack Bland** played the Vega tenor lutes they sometimes used with the **Mound City Blue Blowers** in the 1920s. The Vega Co. of Boston, Mass., known for tenor banjos, offered the tenor lute from 1926 to 1931, and later, archtop tenor guitars. Above is Condon with his plectrum banjo in the 1920s, and with his Gibson plectrum guitar in 1964.